

THE ARDEA

Project Details

Project No.	B2540.00
Year of Completion	2009
Location	Portland, OR

Project Team

Client	Williams & Dame Development Inc. Gerding Edlen Development, LLC
Architect	GBD Architects Inc.
Contractor	Hoffman Construction Co.

RDH Services

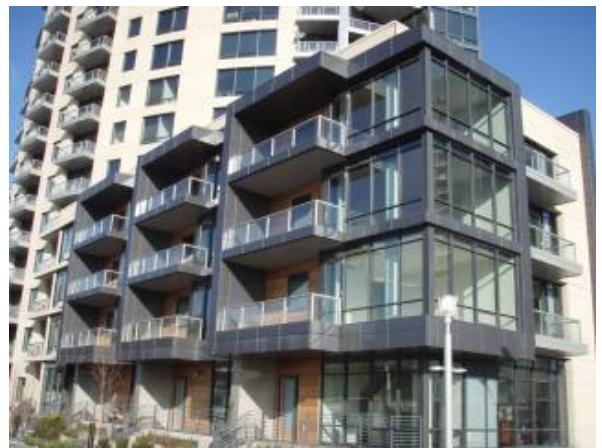
- Design consulting
- Field review
- Post construction
- Research

RDH Staff

Principal	Ariel Levy
Key Staff	Rob Orlowski

Project Description

- Floor Area: 580,580 sq ft
- Number of Stories: 31
- Use/Occupancy: Residential
- Window wall.
- Rainscreen precast concrete.
- Vegetated roofs.
- Plaza decks.
- Project includes substantial area of precast curtain wall panels installed in a rainscreen assembly. Significant team design efforts including contractor and subcontractor participation were critical in achieving this objective.
- Off-site performance mock-up of cladding as well as on-site, off-building, and on-building mock-ups were utilized extensively.
- LEED Gold building.



Project Profile