

AZURA 2

Project Details

Project No.	3160.00
Year of Completion	2008
Location	Vancouver, BC

Project Team

Client	Residential Strata Corporation
--------	--------------------------------

RDH Services

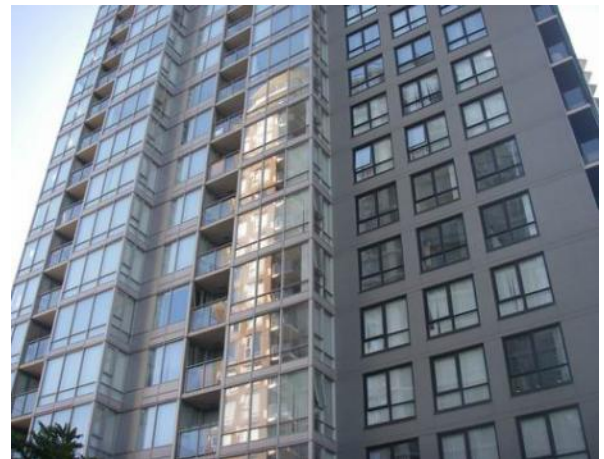
- Reserve study
- Maintenance and renewals plan

RDH Staff

Project Manager	David Albrice
Key Staff	Melissa Pressnail
	Matt Branch

Project Description

- Size: 290,000 sq ft
- Number of Suites: 209
- Use/Occupancy: Residential
- Constructed in 2004, comprised of a tower and townhouses.
- Contains an upscale 10,000 sq ft recreation facility that is shared by three neighbouring residential high-rise towers.
- The owners had received an incomplete maintenance and renewals plan from the developer, which was deemed to be inadequate for long-range planning purposes.
- The owners were provided with detailed inventories of the assets at the high-rise tower and the recreation facility, which were reconciled with the original reports provided by the developer.
- A separate report was provided for the recreation facility so that the owners could make appropriate cost sharing arrangements with the two neighbouring towers.
- The facility manager updated the original maintenance schedules to reflect the refined checklists.
- Adjustments were made to the annual reserve allocations.



Project Profile